

FITC Anti-Human CD45 Monoclonal Antibody



天津三箭生物技术股份有限公司
Tianjin Sungene Biotech Co., Ltd.
精准 高效 稳定 Precision Efficient Stable

Catalog Number	Vial Size
H20451-02G	25 tests
H20451-02H	100 tests

Market	400-621-0003 marketing@sungenebiotech.com
Support	022-66211636-8024 techsupport@sungenebiotech.com
Web	www.sungenebiotech.com

Important Note: Centrifuge before opening to ensure complete recovery of vial contents.
This product is guaranteed up to one year from purchase.

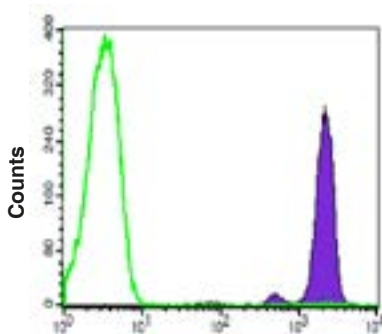
Purified Antibody Characterization

Clone	Isotype	Reactivity
HI30	Mouse IgG1	Human

Description

CD45 is a 180-240 kD single chain type I membrane glycoprotein also known as leukocyte common antigen (LCA), B220, and T200. It is a tyrosine phosphatase expressed on the plasma membrane of all hematopoietic cells, except erythrocytes and platelets. CD45 is a signaling molecule that regulates a variety of cellular processes including cell growth, differentiation, cell cycle, and oncogenic transformation. CD45 plays a critical role in T and B cell antigen receptor-mediated activation by dephosphorylating substrates including p56Lck, p59Fyn, and other Src family kinases. CD45 non-covalently associates with lymphocyte phosphatase-associated phosphoprotein (LPAP) on T and B lymphocytes. CD45 has been reported to bind galectin-1 and to be associated with several other cell surface antigens including CD1, CD2, CD3, and CD4.

Illustration of Immunofluorescent Staining



Log Fluorescence Intensity
Human peripheral blood lymphocytes stained
with FITC anti-human CD45

Product Information

Conjugation: FITC

Formulation: PBS pH 7.2, 0.09% NaN₃, 0.2% BSA

Storage: Keep as concentrated solution. Store at 4°C and protected from prolonged exposure to light. **Do not freeze.**

Application: Recommended Application: FC

Usage: Each lot of this antibody is quality control tested by immunofluorescent staining with flow cytometric analysis (The amount of the reagent is suggested to be used from 20 μL to 5 μL per 100 μL of peripheral blood. Please check your vial). Since applications vary, the appropriate dilutions must be determined for individual use.

References

- [1] Knapp, W., et al. 1989. Leucocyte Typing IV. Oxford University Press. New York.
- [2] Kishihara, K., et al. 1993. Cell 74:143.
- [3] Esser, M., et al. 2001. J. Virol. 75:6173.
- [4] Yamada, T., et al. 2002. J. Biol. Chem. 277:28830.
- [5] Nagano, M., et al. 2007. Blood 110:151.

For Research Use Only.